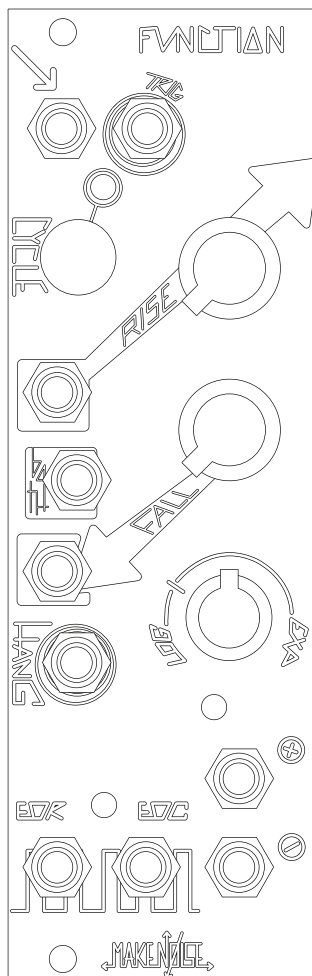


FUNCTION



← MAKE NOISE →

TABLE OF CONTENTS

1. LIMITED WARRANTY
2. INSTALLATION
3. PANEL CONTROLS
4. OVERVIEW
5. TIPS & TRICKS
6. PATCH IDEAS



LIMITED WARRANTY

Make Noise warrants this product to be free of defects in materials or construction for a period of one year from the date of purchase (proof of purchase/invoice required).

Malfunction resulting from wrong power supply voltages, backwards or reversed eurorack bus board cable connection, abuse of the product, removing knobs, changing faceplates, or any other causes determined by Make Noise to be the fault of the user are not covered by this warranty, and normal service rates will apply.

During the warranty period, any defective products will be repaired or replaced, at the option of Make Noise, on a return-to-Make Noise basis with the customer paying the transit cost to Make Noise.

Make Noise implies and accepts no responsibility for harm to person or apparatus caused through operation of this product.

Please contact technical@makenoisemusic.com with any questions, Return To Manufacturer Authorization, or any needs & comments.

<http://www.makenoisemusic.com>

About This Manual:

Written by Tony Rolando
Edited by Walker Farrell
Layout and illustration by Lewis Dahm

THANK YOU

Beta Analyst: Peter Speer
Test Subject: James Cigler
Spiritual Advisor: Richard Devine

Special thanx to MATHS!



INSTALLATION

Electrocution hazard!

Always turn the Eurorack case off and unplug the power cord before plugging or unplugging any Eurorack bus board connection cable. Do not touch any electrical terminals when attaching any Eurorack bus board cable.

The Make Noise FUNCTION is an electronic music module requiring 30mA of +12VDC and 20mA of -12VDC regulated voltage and a properly formatted distribution receptacle to operate. It must be properly installed into a Eurorack format modular synthesizer system case.

Go to <http://www.makenoisemusic.com/> for examples of Eurorack Systems and Cases.

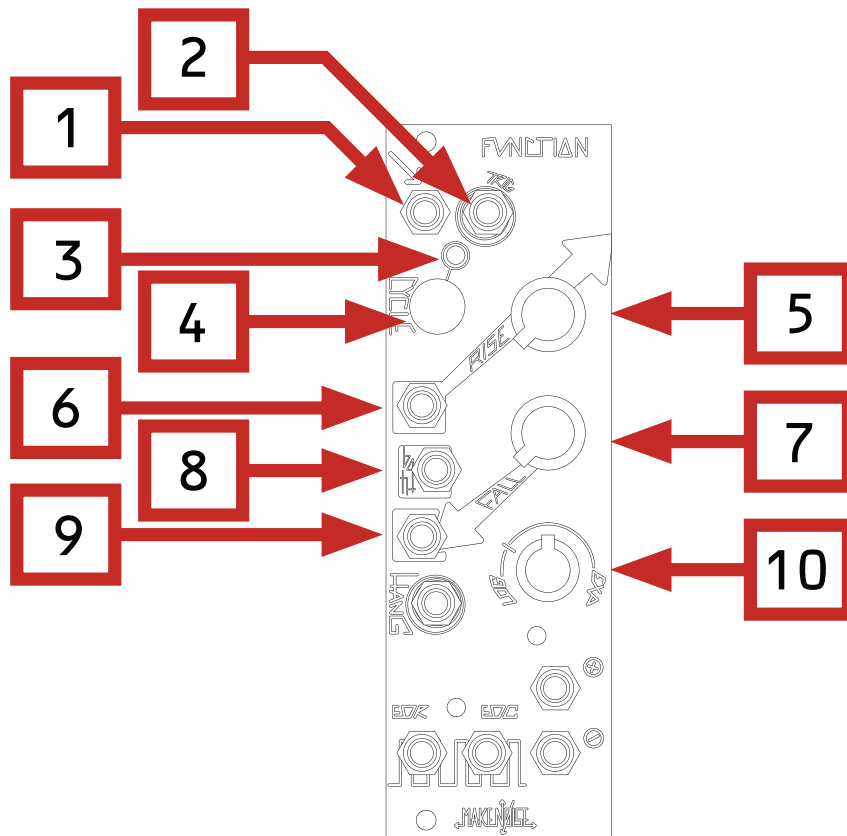
To install, find 8HP in your Eurorack synthesizer case, confirm proper installation of Eurorack bus board connector cable on backside of module (see picture below), plug the bus board connector cable into the Eurorack style bus board, minding the polarity so that the RED stripe on the cable is oriented to the NEGATIVE 12 Volt line on both the module and the bus board. On the Make Noise 6U or 3U Busboard, the negative 12 Volt line is indicated by the white stripe.



Please refer to your case manufacturer's specification for location of the negative supply.



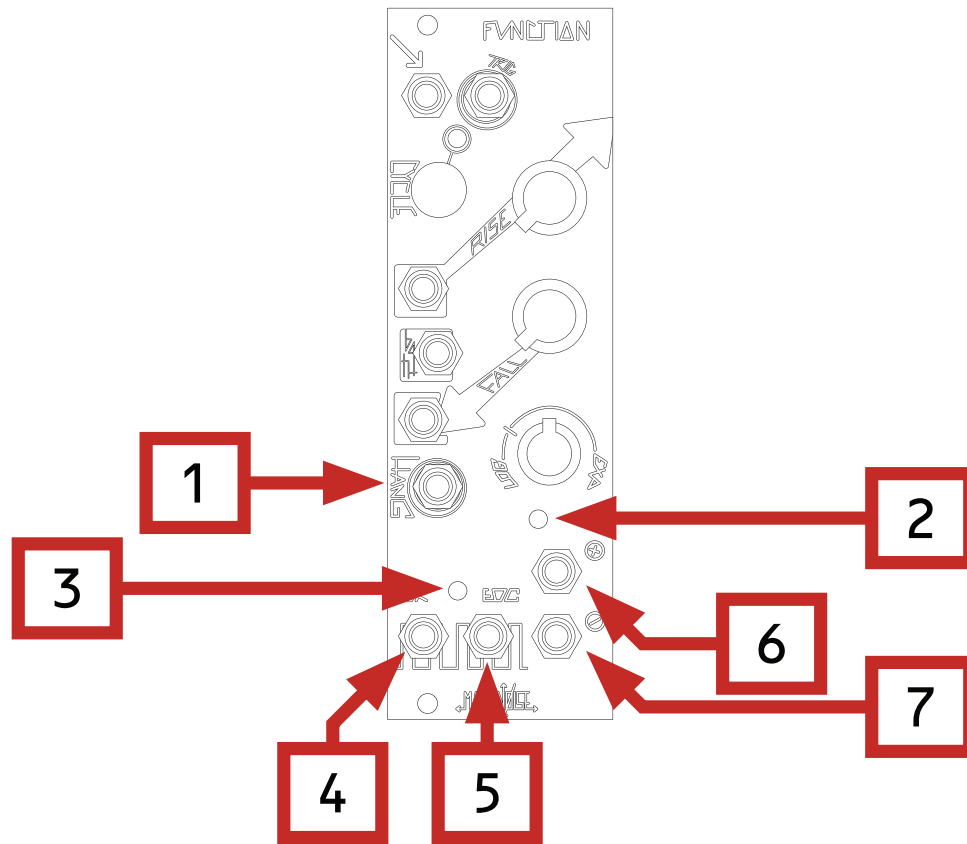
PANEL CONTROLS



1. **Signal Input:** Direct Coupled input to circuit. Use for Lag, Portamento, S&H, T&H and ASR (Attack Sustain Release type envelopes).
2. **Trigger Input:** Gate or Pulse applied to this input will trigger the circuit regardless of activity at the Signal Input. The result being a 0V to 8V function, aka Envelope, whose characteristics are defined by the Rise, Fall, and Vari-Response parameters. Use for Envelope, Pulse Delay, Clock Division, LFO Reset (only during Falling portion).
3. **Cycle LED:** Indicates Cycle On or Off.
4. **Cycle Button:** Causes the circuit to self-cycle, thus generating a repeating voltage function, aka LFO. Use for LFO, Clock, VCO.
5. **Rise Panel Control:** Sets the time it takes for the voltage function to ramp up. CW rotation increases Rise Time.
6. **Rise CV Input:** Linear control signal input for Rise parameter. Positive Control signals increase Rise Time. Negative control signals decrease Rise Time with respect to the Rise panel control setting.
7. **Fall Panel Control:** Sets the time it takes for the voltage function to ramp down. CW rotation increases Fall Time.
8. **Both CV Input:** Bi-Polar Exponential control signal input for entire FUNCTION. Contrary to the Rise and Fall CV Input, BOTH has an Exponential response and Positive control signals decrease total time while Negative control signals increase total time.
9. **Fall CV Input:** Linear control signal input for Fall parameter. Positive control signals increase Fall Time. Negative control signals decrease Fall Time with respect to the Fall panel control.
10. **Vari-Response Panel Control:** Sets the response curve of the voltage function. Response is continuously variable from Logarithmic through Linear to Exponential to Hyper-Exponential. The Tick mark shows the Linear setting.



PANEL CONTROLS



1. **Hang Input:** Gate or Pulse applied to this input will stop the circuit dead in its tracks. Use for programming S&H, Track and Hold, Stepped Functions, Stepped LFOs, synchronized Functions.
2. **LED** indicates activity within the circuit.
3. **EOR/ EOC LED:** Indicates the states of the EOR and EOC outputs. When Red, EOC is High and EOR is Low. When Green, EOR is High and EOC is LOW.
4. **End Of Rise Output:** Goes high at the end of the Rise portion of the function. 0V or 10V.
5. **End Of Cycle Output:** Goes high at the end of the Cycle (or Falling) portion of the function. 0V or 10V.
6. **Non-Inverted Signal Output:** Non-inverted signal from the FUNCTION circuit. Bufered and capable of accurately driving a 4 way multiple. 0-8V when Cycling. Otherwise this output will follow the amplitude of the input.
7. **Inverted Signal Output:** Inverted signal from the FUNCTION circuit. Bufered and capable of accurately driving a 4 way multiple. 0-8V when Cycling. Otherwise this output mirrors the input amplitude.



OVERVIEW

FUNCTION is part of the MATHS family of control voltage utility modules. It is a small analog computer designed for musical purposes. Amongst other things, the Function allows you to:

1. Generate a variety of linear, logarithmic, or exponential triggered or continuous functions
2. Generate discrete time functions
3. Integrate an incoming signal
4. Invert an incoming signal
5. Generate analog signals from digital information (Gate/Clock)
6. Generate digital information (Gate/Clock) from analog signals
7. Delay digital (Gate/Clock) information

If the above list reads like science rather than music, here is the translation:

1. Voltage Controlled Envelope or LFO
2. Stepped voltages like Sample and Hold, Track and Hold, Staircase LFO
3. Apply Lag, Slew or Portamento to control voltages
4. Modulate backwards!
5. Musical Events such as Ramping up or Down in Tempo, on command
6. Initiating Musical events upon sensing motion in the system
7. Musical note division and/or Flam

Indeed the FUNCTION is a direct descendent of MATHS, sharing the same core circuit, complete with some evolutions:

1. Since most Make Noise modules have attenuators on the CV inputs, the scaling/ inversion feature has been replaced with dedicated Non-Inverted/ Inverted outputs. This is useful as you could have the same signal modulating two different destinations in opposition.
2. As FUNCTION is single channel design, we included both EOR and EOC. There are interesting things you could do with these outputs such as ams (see patch tips). Much like CH 1 and 4 on the MATHS, multiple FUNCTIONS can also be used to program complex functions using EOR and EOC.
3. The evolution in the circuit is the Hang Input. On Gate HIGH at the Hang Input, the FUNCTION is stopped dead in its tracks. With Hang, you can program Stepped LFOs, Synchronized Functions (using multiple of clock), S&H, Track & Hold, Clock Run/Stop (using EOR or EOC Output for Clock) and more.



TIPS & TRICKS

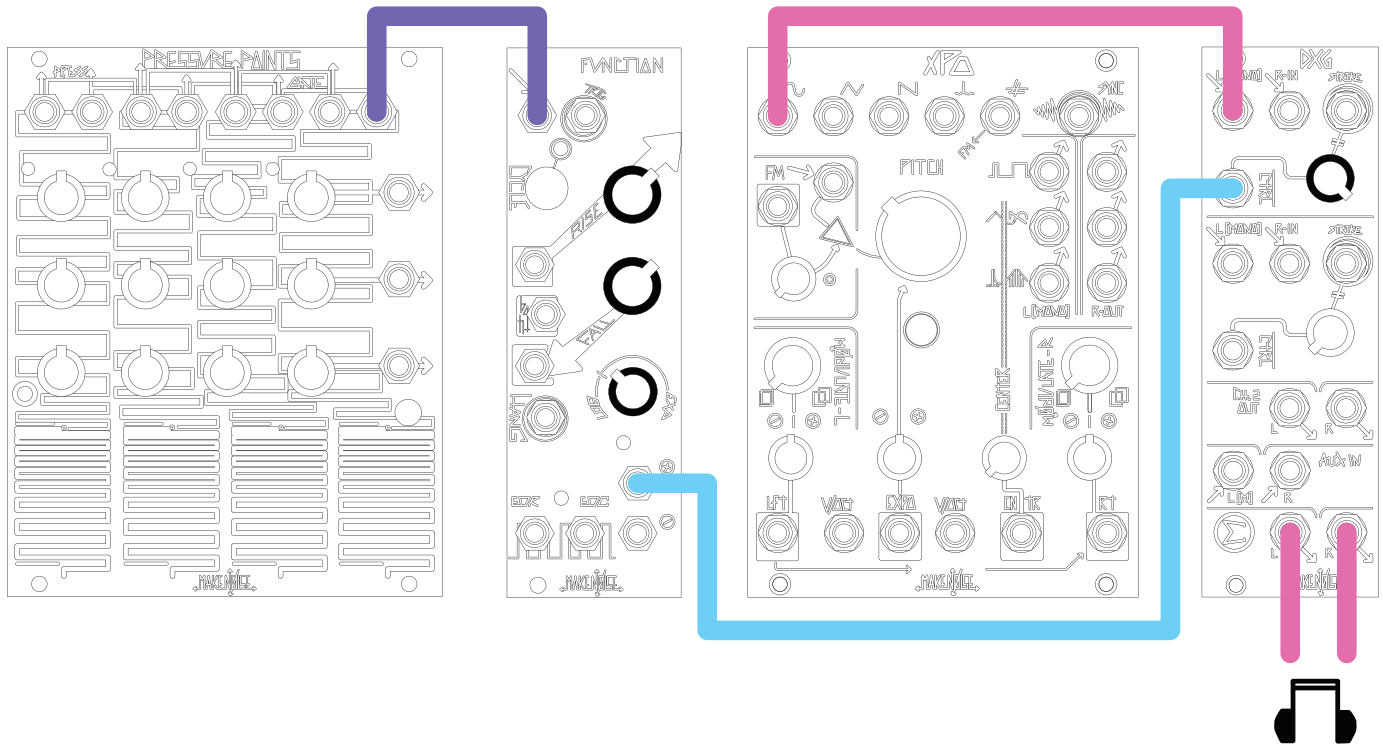
- Longer cycles are achieved with more Logarithmic response curves. The fastest, sharpest functions are achieved with extreme exponential response curves.
- Adjustment to the response curve affects Rise and Fall Times.
- To achieve longer or shorter Rise and Fall Times than available from Panel Controls, apply a voltage offset to the Control Signal Inputs.
- Extremely long cycles may be achieved by setting Rise and Fall to about 12:00 and patching a slow clock to Hang.
- It helps to have control over the Width of the Gate/Clock applied to the Hang input, so a MATHS (or other modules with Gate/ clock width control such as CONTOUR) is very handy.
- Use the Inverted Signal Output where you require reversed modulation but do not have means for inversion at the CV destination (no attenuverter).
- Feeding the Inverted Signal Output back into the FUNCTION at any of the CV inputs is highly useful (see patch tips).



PATCH IDEAS



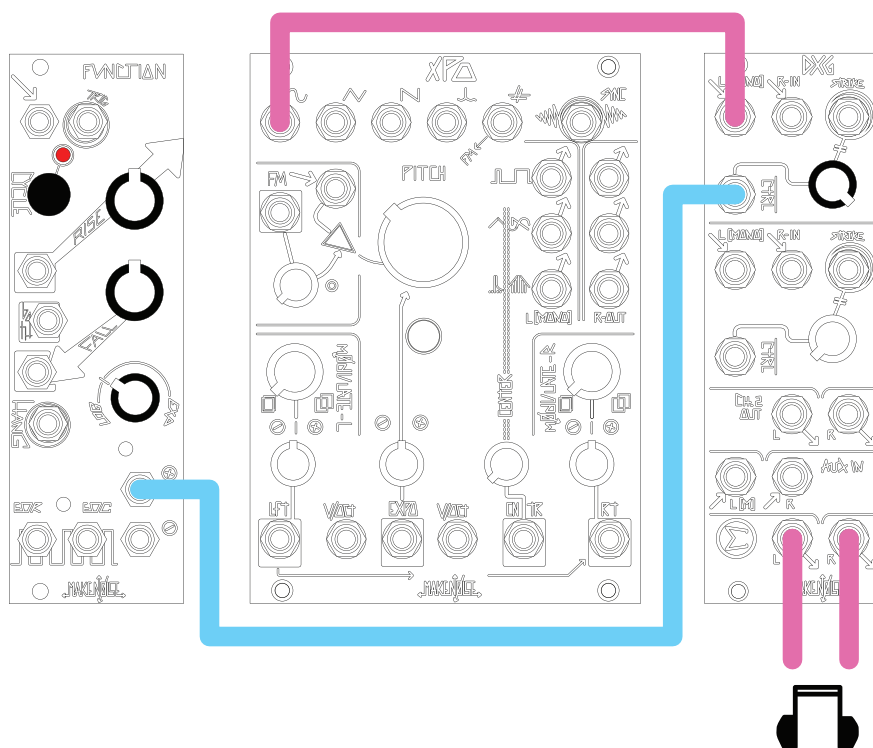
VOLTAGE CONTROLLED SUSTAINED FUNCTION GENERATOR (A/S/R ENVELOPE)



A gate applied to the Signal Input starts the function which rises from 0V to the level of the applied Gate at a rate determined by the Rise parameter. The function Sustains at that level until the Gate signal ends, then Falls from that level to 0V at a rate determined by the Fall parameter. Rise and Fall are independently voltage controllable, with variable response as set by the Vari-Response panel Control.



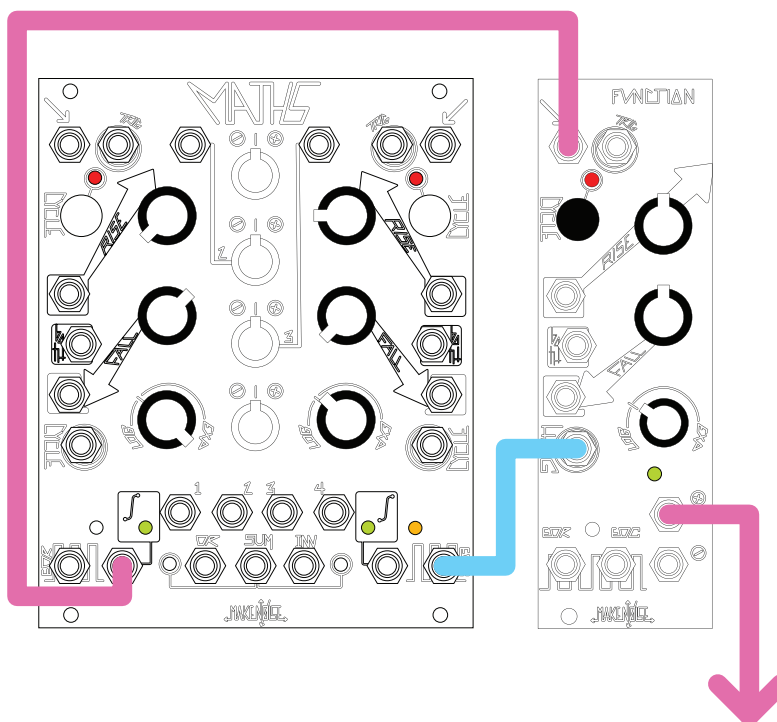
TYPICAL VOLTAGE CONTROLLED TRIANGLE FUNCTION (LFO)



Push Cycle Button. Cycle LED lights. Set Rise and Fall Panel Control to 12:00. Apply desired modulation to BOTH CV input. Setting Rise and Fall parameters further CW will provide longer cycles. Setting these parameters further CCW will provide short cycles, up to audio rate. The shape of the resulting function may be varied from LOG to LINEAR to EXPO using the Vari-Response panel control.



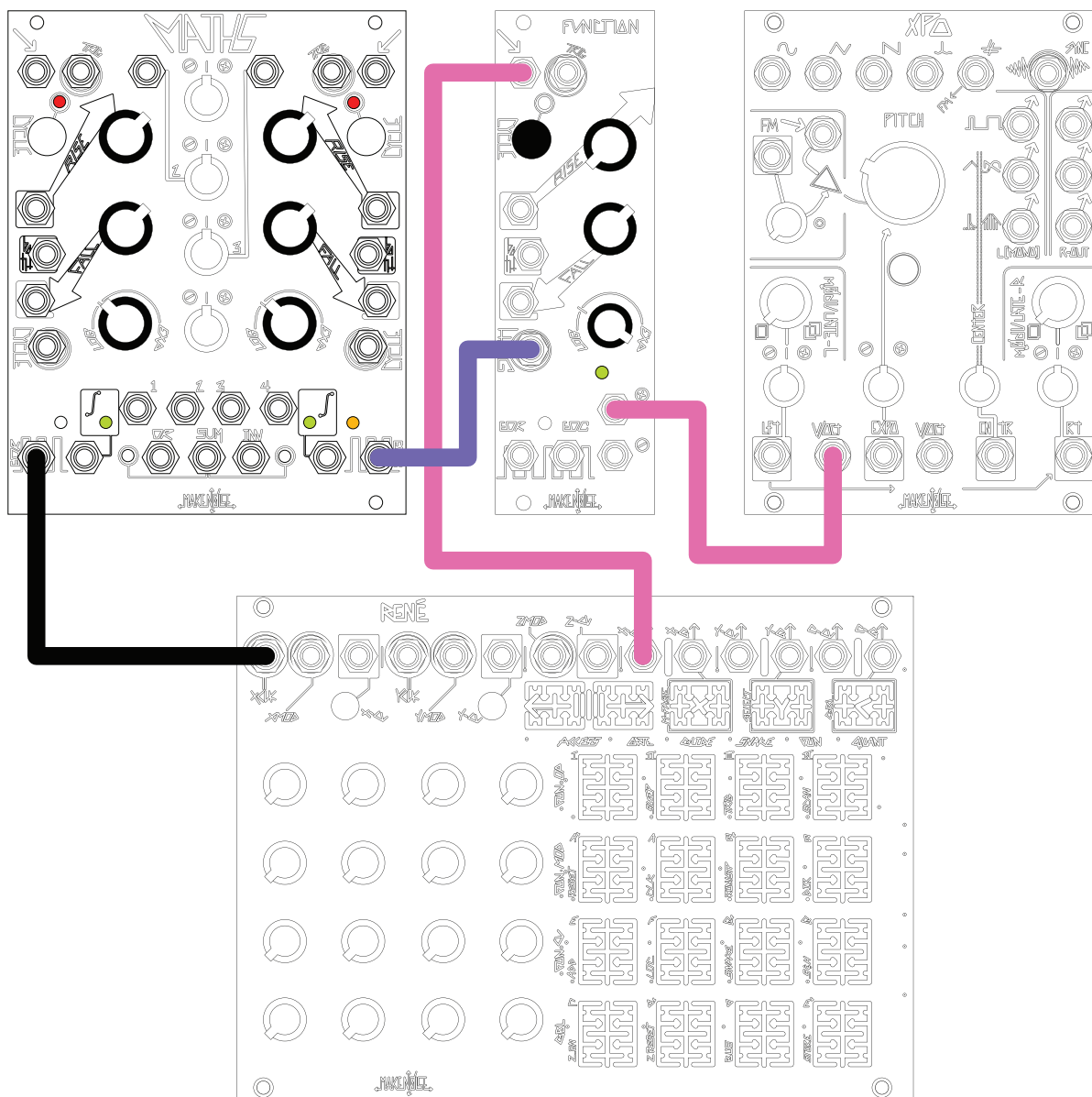
SAMPLE & HOLD



Signal to be processed is patched to Signal Input. Clock signal patched to Hang Input. Clock signal must be wide in order to achieve S&H. In other words, the clock should be High most of the time, going low for only a short time. An example of this type of clock signal would be to use another FUNCTION (or a channel of a MATHS). Use the EOC, with Fall set to full counter clockwise and setting the Rise to determine the rate. The FUNCTION'S Rise and Fall parameters determine the range of possible values.



TRACK & HOLD



Signal to be processed is patched to Signal Input. Clock or Gate signal patched to Hang Input. Signal passes to the Signal Output with the Rise and Fall parameters determining the slew rate. When the Hang Input goes High, the Signal Output is held at the current voltage, until the Hang Input goes Low.



MORE PATCH IDEAS

Typical Voltage Controlled Pulse (Clock, LFO)

Same as Voltage Controlled Triangle FUNCTION, only the output is taken from EOC or EOR. Using EOR, the Rise parameter will more effectively adjust frequency, and Fall parameter will adjust pulse width. Using EOC, the opposite is true: where Rise more effectively adjusts Width and Fall adjust frequency. All adjustments to Rise and Fall parameters affect frequency. Hang Input acts as Start/Stop control with the Clock Stopping when you send a Gate High to Hang.

Flip-Flop (1-Bit Memory)

In this patch, Trigger Input acts as the “Set” input and the Both Control Input acts as the “Reset” input. Apply Reset signal to the Both Control Input. Apply Gate or logic signal to Trigger Input. Set Rise to full counter-clockwise, Fall to Full CW, Vari-Response to Linear. Take “Q” Output from EOR, “NOT Q” from the EOC Output. This patch has a memory limit of about 3 minutes, after which, it forgets the one thing you told it to remember.

Voltage Controlled Pulse Delay Processor

Apply Trigger or Gate to Trigger Input. Take output from End Of Rise. Rise parameter will set the delay and Fall parameter will adjust width of the resulting delayed pulse.

Voltage Controlled Flam

Apply Trigger, Clock or Gate to Trigger Input. Set Rise for Full CCW. Fall for at least 12:00. Take output 1 from End Of Rise, and patch to OPTOMIX CH. 1 Strike Input. Take output 2, the Flam, from EOC, patch to Optomix CH. 2 Strike Input. Apply Signal(s) to be Flammed at OPTOMIX Signal Input 1 and 2. Monitor SUM Output. Flam control is performed with the Fall parameter.

Voltage Controlled Clock Divider

Clock signal applied to Trigger Input is processed by a divisor as set by Rise parameter. Increasing Rise sets divisor higher, resulting in larger divisions. Fall time adjusts the width of the resulting clock. If the Width is adjusted to be greater than the total time of the division the output will remain “High.” Take output from EOR or EOC.

Staircase FUNCTION (Triggered or Continuous)

Set up for Typical Voltage Controlled LFO (see above). Patch clock signal to Hang Input. Clock should be at higher frequency than that of the function.

Voltage Controlled Transient Generator (Attack/ Decay Envelope)

A pulse or gate applied to the Trigger Input starts the transient function, which rises from 0V to 8V at a rate determined by the Rise parameter, then Falls from 8V to 0V at a rate determined by the Fall parameter. This function is re-triggerable during the falling portion. Rise and Fall are independently voltage controllable, with response as set by the Vari-Response panel Control.



Typical Voltage Controlled Ramp Function (LFO)

As above, only the Rise parameter is set FULL CCW, Fall parameter is set to at least 12:00. Fall parameter as well as the BOTH control voltage Input determines the rate.

VC LAG/ Slew Processor/ Portamento

A signal applied to the Signal Input is slewed according to the RISE and FALL parameters. Variable response from Log through Linear to Exponential, as set by the Vari-Response panel Control. Portamento is traditionally LOG response. The inverse of the resulting function is available at the Inverted Signal Output. Independent Contours (Expo Rise w/ Log Fall and vice versa) Set Vari-Response to Full CCW for Log response. Patch Inverted Output to Rise CV Input. This yields Expo Rise with Log Fall for most any function. If Inverted Output is patched to Fall CV Input, Log Rise w/ Expo Fall is achieved. By setting Vari-Response to Linear, combinations of Linear and Expo or Log are possible.

Envelope Follower

Apply Signal to be followed to the Signal Input. Set Rise to 12:00. Set and or modulate Fall Time to achieve different amounts of Smoothing. Take output from Non-Inverted Signal Output. Increasing the Fall Time to beyond 2:00 will result in the Peaks being held for long periods of time. EOR and EOC will also indicate activity at the Signal IN. A variation on this patch has EOR patched to the Hang Input. The Peak is detected and held until user resets (by removing patch cable from Hang Input).

Multiplication (VCA)

Apply positive going Control Signal to be multiplied to Signal Input. Set Rise and Fall to full CCW. Apply positive going Control Signal (multiplier) to the Both Control Input. Take output from Signal Output.

